

28 Meade Court, Walton On The Hill

£655,000

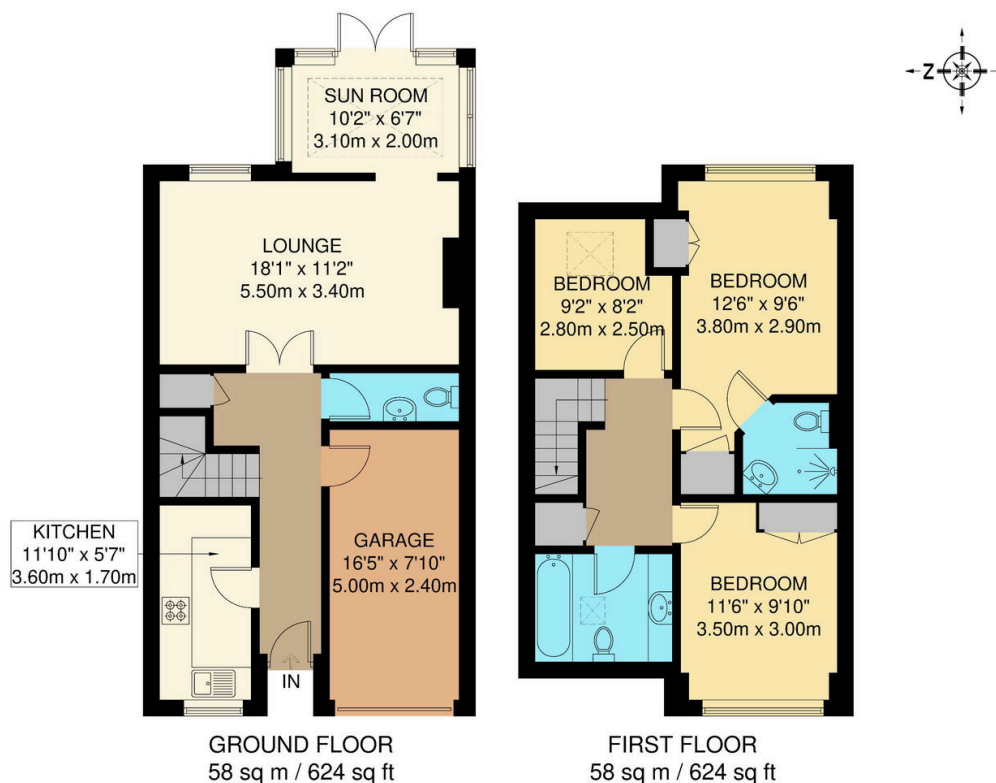
3 2 1



Ref: AB0796. This immaculate three-bedroom terraced cottage, located in the desirable mews-style gated development in Walton on the Hill, Surrey, offers a blend of traditional charm and modern amenities. Built in 1993 by Berkeley Homes, it features a recently upgraded high-quality kitchen, a bright lounge/diner, and a cozy conservatory on the ground floor. Upstairs, the primary bedroom includes an en-suite, and a family bathroom serves the additional two bedrooms. The property also includes a garage, driveway parking, and a low-maintenance garden with a generous patio, providing comfortable and convenient village living.

Key Features

- Ref: AB0796
- Extensively modernised
- Cozy conservatory
- Downstairs cloakroom
- Garage, driveway and private garden
- Three-bedroom terraced house
- Bright lounge/diner
- High-quality kitchen
- Master bedroom with ensuite shower room
- Situated in the heart of Walton on the Hill village, adjacent to open fields, providing a peaceful and scenic setting



Whilst every attempt has been made to ensure the accuracy of the floorplan contained here, measurements of doors, windows, rooms and any other items are approximate and no responsibility is taken for any error omission or mis-statement. This plan is for illustrative purposes only and should be used as such by any prospective purchaser. The services, systems and appliances shown have not been tested and no guarantee as to their operability or efficiency can be given.